

Go with the curve!

Curve - Corners for Drywall

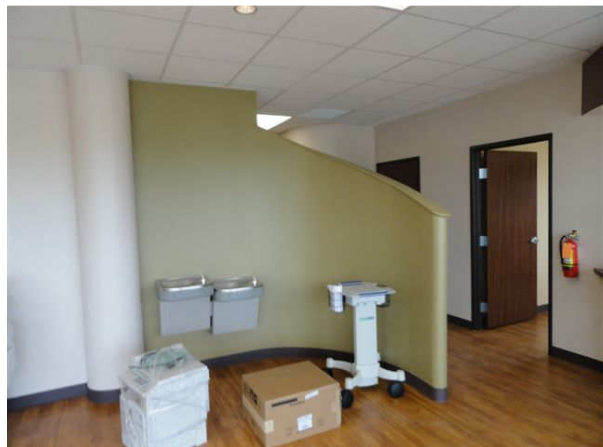
The easiest way to create
tight curved corners:
90 degree Internal Corners
90 degree External Corners
180 degree End-caps
Column Covers



Improves room aesthetics

- Eliminates cleaning dead-spots
- Increases corner insulation
- Reduces paint chipping on corners
- Eases traffic

Installs and finishes like drywall
Standard drywall thickness (1/2"
& 5/8")
Areal weight 80% less than
drywall



Fulcrum Composites, Inc.
1407 E. Grove St.
Midland, MI 48640

Ph: 989-636-1025
Fax: 989-837-1566

www.fulcrumcomposites.com/curve.html
info@fulcrumcomposites.com

Go with the curve!



Install like drywall



Tape & Mud like drywall



Finish & Prime like drywall



Paint like drywall

Fulcrum Composites, Inc.
1407 E. Grove St.
Midland, MI 48640

Ph: 989-636-1025
Fax: 989-837-1566
www.fulcrumcomposites.com/curve.html
info@fulcrumcomposites.com

Go with the curve!

Installation and Usage Tips

- Corners and endcaps have 2 1/4" straights from the curve to fit the middle of a double stud
- Use depth-set drywall screws. Installation torque will be lower than standard drywall
- If it is necessary to cut:
Preferably use a table saw with a fence and a sharp blade
Can also cut with a sharp utility knife. Cut through BOTH skins
- Avoid peeling skins away from core
- Avoid denting edges
- Install corners first if possible
- Column long edges have a recessed joint to hide joint
- Recessed long edge optional on corners
- Tape, mud, finish and paint like drywall
- *Drywall products and techniques vary significantly. We strongly recommend that you experiment with your intended finishing system to ensure satisfactory results before implementing on a project.*

Environmental Benefits

- Insulation value
R 5/in (drywall is R 0.9/in)
- Improves corner insulation where most heat is lost
- Lightweight
0.3lbs/sqft (drywall is 1.7lbs/sqft)
Reduced transport energy
- Lower embodied energy
- Space saving
Easing outside corners may allow reduced corridor width
- Reduces corner chips and dings
Less frequent painting
Less waste
- Less scrap
Corners are supplied cut to size
No breakage in bending drywall to tight radii

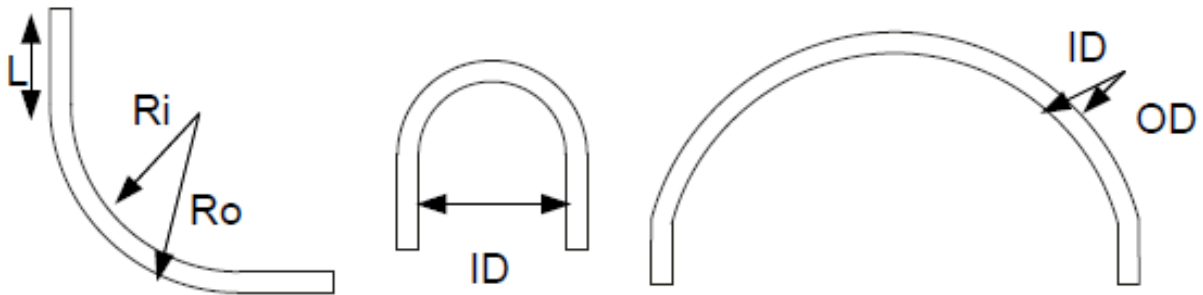
This product is not fire rated and should not be used as part of a fire barrier
Not be used as a load bearing structure
Always consult local building codes

Fulcrum Composites, Inc.
1407 E. Grove St.
Midland, MI 48640

Ph: 989-636-1025
Fax: 989-837-1566
www.fulcrumcomposites.com/curve.html
info@fulcrumcomposites.com

Go with the curve!

180 Degree Corner



90 Degree Corner

Column Cover

Corners	Inside Radius (Ri)	Outside Radius (Ro)	Thickness	Flat (L)
Inside Corner*	4"		½" or 5/8"	2 ¼"
Outside Corner*		8 ½"		2 ¼"
180 Degree Corner*	3 ½" or 3 5/8"		½" or 5/8"	2 ¼"
Columns	Inside Diameter (ID)	Outside Diameter (OD)	Thickness	Flat
Small	11"	12"	½"	1 ¾"
Medium	14"	15"	½"	1 ¾"
Large	19"	20"	½"	1 ¾"

*Specify with or without taper to match drywall long edge

Column covers can be purchased individually – as 180 degree half columns or as column kits – two half columns + long finishing sandpaper. Curved knives are also available.

**If you don't see the dimensions you require – Call us
We'd love to create it for you!**

Fulcrum Composites, Inc.
1407 E. Grove St.
Midland, MI 48640

Ph: 989-636-1025
Fax: 989-837-1566
www.fulcrumcomposites.com/curve.html
info@fulcrumcomposites.com